



DEP™

Distance to Excavated Profile sensor



The DEP™ is a device that measures and indicates the optimized distance between the spraying nozzle of the shotcrete machine and the excavated surface.

It informs the nozzleman in real-time when corrections need to be made to keep an optimal distance and thereby reduce the amount of concrete rebound and waste.

The DEP™ can be used as an independent device or results can be recorded and displayed into Mobbot's cloud dashboard, presenting the distance variation during spraying session for quality control purpose, historical tracking data and shifts comparison.

The device is equipped with water and air cleaning jets to keep the surface of the sensor clean.

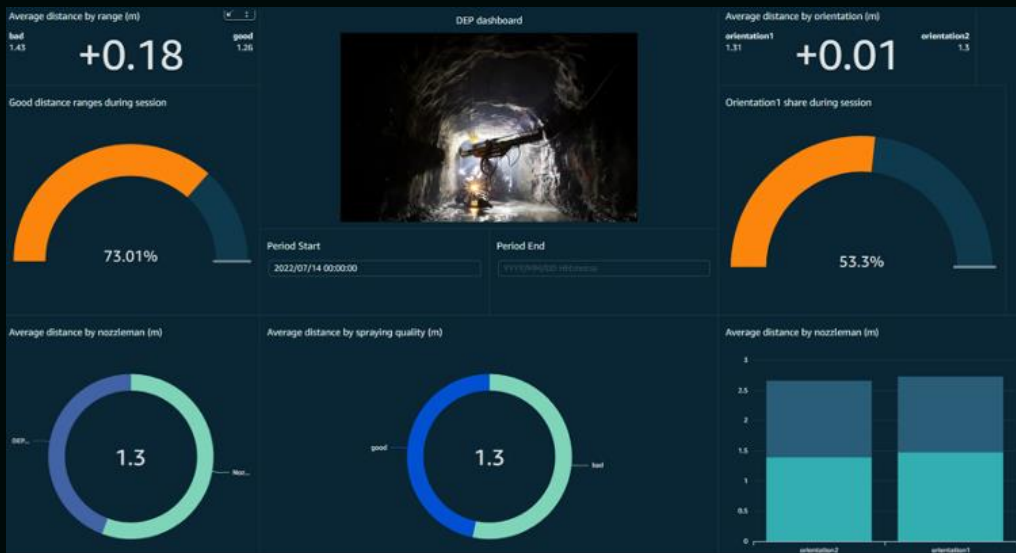
Challenges

- Difficulty in controlling the concrete spraying distance
- No support for nozzleman to do their job correctly

Benefits

- Reduction of rebounds
- Reduction of logistic of waste
- Homogenization of shotcrete practices between teams
- Uniformed concrete quality

Mobbot Solutions



TECHNICAL FEATURES

- Laser technology efficient in tough working conditions
- Real-time feedback using visual information (light on)
- Self-cleaning system
- Installation possible on any kind of shotcrete machines
- Data acquisition frequency: 10 Hz
- 24V plug - 12V available upon request
- Warning light flashing when distance is not correct to support the nozzleman
- Available with Mobbot dashboard

DIMENSIONS

- Sensor device : 16x8.5x6.8cm
- Air compressor box: 50x32x22cm
- Water tank: 45x19x37cm



To learn more about our solutions and how you can optimize your shotcrete performance, write to us at the email address below.

Damien Emery
Head of Sales & Marketing

info@mobbot.ch