



GILAMONT TUNNEL

800m Tunnel located in Switzerland

Gilamont hydroelectric power station in Switzerland

BACKGROUND

A new tunnel of about 800 meters length and 3.8m height is to be excavated so that the Gilamont hydroelectric plant can supply some 800 households in the Vevey region of Switzerland.

The machine used for the wet concrete spraying is a **Meyco ME3**, already equipped with sensors of data collection, such as: concrete and accelerator consumption and flow rate. In the original machine, this data is merely stored locally, and in raw format difficult to interpret and manipulate, making it time consuming and complex to use. Furthermore no information about air parameters are registered, which is critical for spraying efficiency and quality



CHALLENGE

- No information about air spraying parameters
- No accessible information about concrete and accelerator consumption
- Large variation of rebound between teams

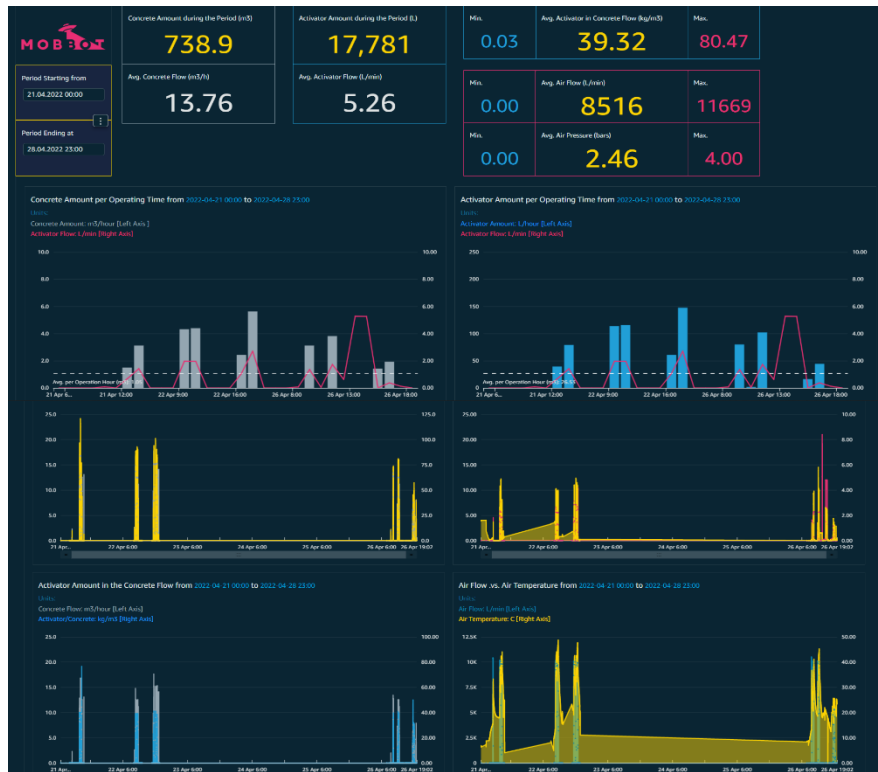
BENEFITS

- First step not to merely rely on the nozzleman, and to educate and train new people
- Better control between concrete delivered vs used resulting in a reduction of concrete purchase



Mobbot box connected to the Meyco machine ME3.

MOBBOT SOLUTIONS



TECHNICAL INFORMATION

- Installation of sensors on the air feed system to monitor air flow, pressure and temperature
- Collection and transmission to the cloud the data already collected by the spraying machine
- Robust solution – the machine is currently working on a new project, with access to data through the dashboard

PRODUCT FEATURES

- Data of all spraying parameters presented together, in the clear manner
- Graphical presentation of results in online dashboard for project management
- Better understanding of machine operations for preventive maintenance

To learn more about our solutions and how you can optimise your performance, please write to us at the email address below.

Mobbot SA
Route de la Glâne 26
1700 Fribourg, Switzerland
+41 26 422 1060

Head of Sales & Marketing
Damien Emery
info@mobbot.ch

